

Long Island Botanical Society

Vol. 32 No. 1

The Quarterly Newsletter

Winter 2022

Checklist of the Vascular Plants of Natural Areas in Northern Queens County, Long Island, New York

Andrew M. Greller¹, César A. Castillo¹, and Eric E. Lamont²

¹Department of Biology, Queens College, Flushing, New York

²President, Long Island Botanical Society

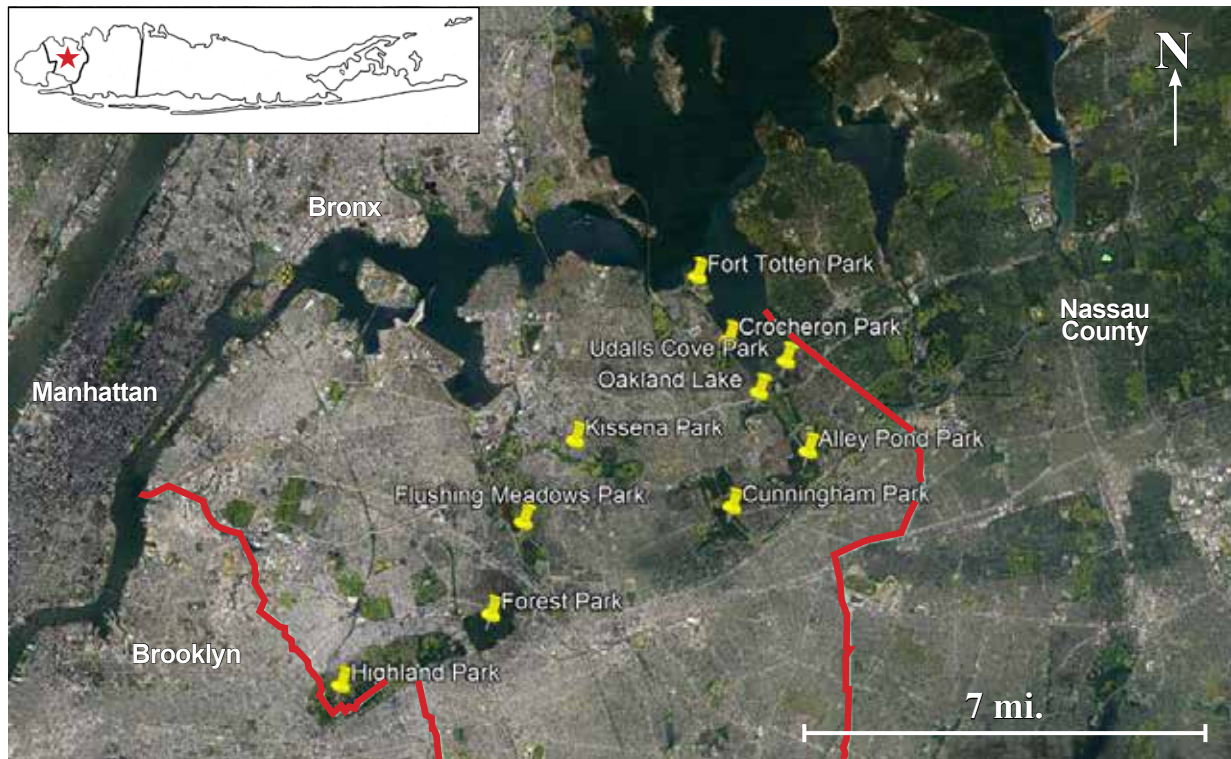


Figure 1. Map of northern Queens County, New York, showing locations of the 10 study sites (marked with yellow thumbtacks). The east and west boundaries of Queens Co. are delineated in red. Insert: map of Long Island showing the location of Queens County (red star). Image from Google Earth.

Introduction

After several years of field work, Greller published a checklist of vascular plants for the forested portion of Cunningham Park, Queens County, New York (Greller 1977). When nearby parks on the terminal moraine (Harbor Hill Moraine) of the Wisconsin Ice Sheet (southern limit of northern Queens) were investigated, the list was expanded to include some additional plants (Greller 1979, 1985; Greller, Panuccio and Durando 1991). Figure 1 shows the location of Queens County on a map of Long Island, New York.

Greller continued to record the flora of Queens Co., on- and north of the terminal moraine since 1991. He privately noted that some

rare plants had apparently disappeared from the forested area (e.g., *Silene caroliniana*, *Botrychium virginianum*, and a few members of the Ericaceae). Partly, these disappearances can be ascribed to changing forest conditions, from open woods in 1940 to present day tall, closed forests. Most recently, exotic plants such as *Rosa multiflora*, *Ampelopsis glandulosa*, and several *Viburnum* species have become dominants in the understory, especially in the area of Cunningham Park south of Union Tpke., east of Francis Lewis Blvd. Also, in the past few years, Citizen Science has become popular and has been channeled into computer applications such as iNaturalist (available at <https://www.inaturalist.org>). Now

(continued on page 3)

Long Island Botanical Society

Founded: 1986 • Incorporated: 1989

The Long Island Botanical Society is dedicated to the promotion of field botany and a greater understanding of the plants that grow wild on Long Island, New York.

Visit the Society's Web site
www.libotanical.org

Executive Board

President

Eric Lamont 631-722-5542

elamont@optonline.net

Vice President

Andrew Greller agreller2@optonline.net

Treasurer

Kathleen Gaffney kg73@cornell.edu

Recording Secretary

Sue Avery suea483@gmail.com

Corresponding Secretary

John Potente ourialis@gmail.com

Committee Chairpersons

Flora

Eric Lamont elamont@optonline.net

Andrew Greller agreller2@optonline.net

Field Trips

Robert Chapman

bob.chapman516@icloud.com

Programs

John Potente ourialis@gmail.com

Membership

Lois Lindberg lalindberg3@optonline.net

Conservation

Bill Titus dottie11560@hotmail.com

John Turner redknot2@verizon.net

Education

MaryLaura Lamont

woodpink59@gmail.com

Hospitality

Kathleen Gaffney kg73@cornell.edu

Dorothy Titus dottie11560@hotmail.com

Webmaster

Donald House libsweb@yahoo.com

Rich Kelly Day, Coordinator

Sue Feustel suzyfeustel@icloud.com

Newsletter Editor

Eric Lamont

elamont@optonline.net

Society News

LIBS Annual BBQ and Monthly Meetings? On behalf of LIBS, Al Lindberg has been in contact with Nassau County officials concerning the use of Muttontown Preserve as a meeting place for upcoming events. A decision has not yet been made. LIBS hopes to have the BBQ at the preserve in September 2022 followed by the regular schedule of monthly meetings. Updates will be provided in the next issue of the newsletter and posted on the LIBS website.



FIELD TRIPS

August 20, 2022 (Saturday) 10:00am

Mill Pond Preserve, Wantagh, Nassau County, Trip Leader: Andy Greller

Please pre-register with Bob Chapman (bob.chapman516@icloud.com), you will be provided additional info including parking instructions. The preserve features a variety of habitats and a good showing of summer wildflowers.

September 24, 2022 (Saturday) 11am-2pm

The Montauk Miracle Mile, Trip Leader: Vicki Bustamante

Big Reed, Montauk County Park, Suffolk County

Joint field trip with New York Flora Association

Please pre-register with Vicki Bustamante (vickibustamante@gmail.com).

This walk has been recently coined "the Montauk Miracle Mile" due to the many rarities in a one mile stretch along Big Reed Pond which is flanked by a fresh water shallow emergent marsh and a high salt marsh/salt shrub community. Over twenty S1-S3 state ranked plants can be seen.

December 3, 2022 (Saturday) 11am

Lichen Survey, Trip Leader: James Lendemmer

North Fork Preserve, Northville, Suffolk County

Please pre-register with Bob Chapman (bob.chapman516@icloud.com).



About this Special Issue

LIBS is exceedingly pleased to publish Andy Greller's (et al.) flora of northern Queens County based on more than 60 years of study. The flora includes plants growing without cultivation and reproducing in any or all of the 10 northern Queens Co. parks listed in the below key to abbreviations used in the Appendix. Each species is documented with either a herbarium collection, photograph, personal observation, or iNaturalist report. Grellor's vouchers have been deposited in the herbarium of Brooklyn Botanic Garden (BKL in the Appendix), now on long term loan to The New York Botanical Garden; voucher accession numbers are those assigned by BKL. The number following a photo report is presented by date (yr/mo/day) and Grellor's personal observation numbers are those recorded in his field notes. The nomenclature and sequence of taxa in the Appendix follows David Werier's (2017) *Catalogue of the Vascular Plants of New York State*.

Key to Abbreviations in Appendix

Code: AP, Alley Park; BKL, Brooklyn Herbarium; CIP, Cross Island Pkwy; CP, Cunningham Park; FP, Forest Park; FMP, Flushing Meadows Park; FT, Fort Totten; KP, Kissena Park; LBP, Little Bay Pk; Oakl Lk, Oakland Lake; OLP, Oakland Lake Park; QBG, Queens Botanical Garden; QC, Queens College Campus; QCFM, Queens County Farm Museum, Floral Park; [X] = extirpated.

(Checklist of Vascular Plants, continued from cover)

numerous observations of the flora of northern Queens Co. have been posted and documented with photographs. Castillo has been particularly active in this regard. Greller decided to include in the checklist the citizen–science flora, as documented in iNaturalist, for previously undocumented natural– and naturalizing locations in the area.

This present contribution to our knowledge of the flora of northern Queens Co. thus expands on the original, 1977, study of Cunningham Park forests by:

1. Expanding systematic observations to other natural areas of northern Queens such as Highland Park, Ridgewood Reservoir, Forest Park and Alley Pond Park.
2. Expanding the observations to other natural areas of northern Queens such as salt marshes, freshwater– and brackish marshes.
3. Attempting to ascertain the present status of plants that were rare in the late 1960's.

Complicating the question of what is native in the flora of northern Queens, has been the human–assisted revegetation of ballfields and construction sites, especially in the Oakland Lake/Alley Pond Park area. It has been reported (M. Feder, pers. comm.) that wildflower seed that originates from nurseries in Minnesota has been used by NYC Parks and Recreation Dept. (NYCPR) in the creation of

a meadow in the former site of ball fields east of 223rd Street in the Oakland Lake area. In another example of habitat alteration, NYCPR created impoundments in the original landfill in the northeastern portion of The Alley, resulting in the loss of habitat for a number of species of *Persicaria* (Greller, pers. obs.).

Acknowledgements

The authors acknowledge with gratitude the help given by Michael Feder (NYCPR), Steven Walter (Greentree Foundation), and Zihao Wang (The Davey Tree Expert Company), in locating and documenting northern Queens Co. plants.

Literature Cited

- Greller, Andrew M. 1977. A vascular flora of the forested portion of Cunningham Park, Queens County, New York, with notes on the vegetation. *Bulletin of the Torrey Botanical Club* 104: 170–176.
- Greller, Andrew M. 1979. A vascular flora of the forested portion of Cunningham Park, Queens County, New York: Corrections and additions. *Bulletin of the Torrey Botanical Club* 106: 45.
- Greller, A.M. 1985. A vascular flora of the forested portion of Cunningham Park, Queens County, New York: Corrections and additions– II. *Bull Torrey Bot. Club* 112: 312.
- Greller, A.M., Panuccio, M.K., and Durando, C.M. 1991. A vascular flora of Cunningham Park, Queens County, New York: Corrections and Additions III. *Bulletin of the Torrey Botanical Club* 118: 330–332.

Appendix FERNS

Equisetales

Equisetaceae

Equisetum arvense – (Greller: KL6121
Gabler's Crk, Douglaston; AP opp
Oakl Lk; The Alley, E and W)

Ophioglossales

Ophioglossaceae

Botrychium virginianum – (Greller
CP coll [X?])

Osmundales

Osmundaceae

Osmunda claytonia – (Greller 080731 CP)
O. regalis – (Greller 080731 CP)
Osmundastrum cinnamomeum –
(Greller obs:120414 AP; 210427 CP)

Salviniales

Salviniaceae

Azolla cristata – (Greller 080731–5 CP)

Polypodiales

Aspleniaceae

Asplenium platyneuron – (Greller:
BKL281800 FT; photo, Maple Grove
Cem, Kew Gard.)

Athyriaceae

Athyrium asplenoides – (Bicknell BKL
282502 Richmond Hill)

Athyrium filix–femina – (Greller, obs
210427 CP)

A. niponicum – (Castillo 47366521
QC campus 200524)

Deparia acrostichoides – (Greller BKL
282628 CP)

Blechnaceae

Anchistea virginica – (Greller photo
210427 CP)

Cystopteridaceae

Cystopteris fragilis – (Castillo, photo Dec
2018 CP)

Dennstaedtiaceae

Dennstaedtia punctilobula – (Kreyling
BKL 282208 CP)

Pteridium aquilinum – (Greller obs
CP [X?])

Dryopteridaceae

Dryopteris carthusiana – (Castillo,
iNat 33100883 AP)

D. intermedia – (Greller BKL 282962)

D. marginalis – (Greller BKL 283022)

Polystichum acrostichoides – (Greller,
obs 080726 AP)

Onocleaceae

Onoclea sensibilis – (Kreyling BKL
283134 CP)

Pteridaceae

Adiantum pedatum – (CP cult.? – [X])

Pellaea atropurpurea – (Castillo, iNat
37340157, Corona, NY, 2001016)

P. glabella (Greller photo 161015 FT
wall)

Thelypteridaceae

Phegopteris connectilis – Greller obs
1970's CP – [X?])

P. hexagonoptera – (Glaeser BKL
285210

CP; Greller obs 210427 CP)

Thelypteris noveboracensis – (Glaeser
BKL 285211 CP)

T. palustris – (Greller 080731–3 CP)

T. simulata – (Greller obs AP – [X])

Woodsiaceae

Woodsia obtusa (Greller BKL 284450 FT)

GYMNOSPERMS

Pinophyta (Coniferophyta)

Pinales

Pinaceae

Pinus strobus – (sapling Greller obs
080417 CP)

Tsuga canadensis – (Louella Sher
860926–20 CP [X])

Cupressales

Cupressaceae

Juniperus virginiana – (Greller obs
161105 cultiv? Kissena Corridor;
Atha iNat 64898288)

(continued on next page)

(Checklist of Vascular Plants, continued from page 3)

- Metasequoia glyptostroboides* – (sapling; Greller coll 080703 AP; confirmed 2 specim. 2015; 210613 AP– Little Alley Pond swamp)
- Taxales [= Cupressales]**
- Taxaceae**
- Taxus cuspidata* – (Greller coll 080417 AP; obs 210427 CP)
- NYMPHAEALES CLADE**
- Nymphaeales**
- Cabombaceae**
- Cabomba caroliniana* – (Campbell QC9695–1 Oakl Lk)
- Nymphaeaceae**
- Nuphar advena* – (Zeiger QC 950906–7 Oakl Lk)
- Nymphaea odorata* – (BuffQC06/05/91 Oakl Lk)
- MAGNOLIIDS**
- Piperales**
- Aristolochiaceae**
- Asarum canadense* – (Feder, image [sterile], publ.151223 FP; Greller obs. 210605 FP)
- Magnoliales**
- Annonaceae**
- Asimina triloba* – (Castillo photo 20211001112052[4556]; 211001 AP)
- Magnoliaceae**
- Liriodendron tulipifera* – (Greller BKL39202 CP)
- Magnolia tripetala* – (Greller obs 930529 CP; cult?)
- Laurales**
- Calycanthaceae**
- Calycanthus floridus* var. *glaucus* – (Greller photo AP)
- Lauraceae**
- Lindera benzoin* (Castillo iNat 60373658 AP)
- Sassafras albidum* – (Delend BKL 175747 Ridgewood Reservoir)
- MONOCOTS**
- Alismatales**
- Alismataceae**
- Alisma subcordatum* – (misidentified as *A. plantago-aquatica*, Greller 690707–15 CP)
- Sagittaria latifolia* – (Barbera QC 880610–3 Oakl Lk)
- Araceae**
- Arisaema triphyllum* – (Delendick BKL42112 Bayside; Greller obs 210427 CP)
- Lemna minor* – (Greller obs 900716 AP)
- L. valdiviana* – (Young NYS Museum, from The Alley)
- Peltandra virginica* – (Barbera QC880610–7 Oakl Lk)
- Spirodela polyrhiza* – (Greller obs 090707 Oakl Lk)
- Symplocarpus foetidus* – (Greller BKL 289408 AP)
- Wolffia brasiliensis* – (Greller 080421–1b CP)
- Wolffia columbiana* – (Greller obs 090707 Oakl Lk)
- Hydrocharitaceae**
- Najas minor* – (Greller 080717–15 Oakl Lk)
- Potamogetonaceae**
- Potamogeton crispus* – (Greller 080605–3 Oakl Lk)
- P. foliosus* (Greller 080717–13 Oakl Lk)
- Stuckenia pectinata* – (Castillo iNat 16976011 FMPk)
- Dioscoreales**
- Dioscoreaceae**
- Dioscorea villosa* – (Greller obs 080726 APEC; coll 080522 AP)
- Liliales**
- Colchicaceae**
- Uvularia sessilifolia* – (Greller BKL 305453 CP)
- Liliaceae**
- Erythronium americanum* – (Greller coll 080417 AP)
- Lilium canadense* – (Greller BKL 325517 CP)
- Medeola virginica* – (Greller BKL 306364 CP; cult? [X?])
- Melanthiaceae**
- Trillium cernuum* – (Greller coll 080726; obs flwrs 120417 AP)
- Smilacaceae**
- Smilax glauca* – (Castillo iNat 36707483 FMPk)
- S. herbacea* – (Glaeser BKL 285235 CP)
- S. rotundifolia* – (Dhamon QC 931007)
- Asparagales**
- Amarylidaceae**
- Allium canadense* – (Atha iNat 81916347 Willet's Point)
- A. tricoccum* – (Greller 900408 CP)
- A. vineale* – (Bennett BKL 309477 CP)
- Galanthus nivalis* – (Greller 080421 CP)
- Asparagaceae**
- Convallaria majalis* – (Greller coll 2008 CP)
- Hosta sp.* (Greller obs CP)
- Liriope muscari* – (Castillo coll 080724 Queens County[?])
- Maianthemum canadense* – (Castillo iNat 59065369 CP)
- M. racemosum* – (Kreyling BKL 306042 CP; Greller obs 190922 The Alley)
- M. stellatum* – (Bennett BKL 269741)
- Ornithogalum nutans* – (Greller coll 080419 Clearview Expr; Eric Morgan 060611 AP)
- O. umbellatum* – (Greller obs 080419 AP)
- Polygonatum biflorum* – (Greller BKL 306690 CP)
- P. commutatum* – (Greller obs CP– Grand Central Pkwy)
- P. pubescens* – (Greller 690524–5, CP)
- Asphodelaceae**
- Hemerocallis fulva* – (Castillo iNat 17397253 AP)
- Hypoxidaceae**
- Hypoxis hirsuta* – (Greller 080515–2 CP)
- Iridaceae**
- Iris pseudacorus* – (Greller 690822–17 AP)
- I. versicolor* – (Atha 190922 The Alley)
- Sisyrinchium angustifolium* – (Greller obs 210605 FP)
- Orchidaceae**
- Cypripedium acaule* – (Greller obs AP [X])
- Epipactis helleborine* – (Greller coll 2008 Oakl Lk; obs 090714 CP)
- Commelinales**
- Commelinaceae**
- Commelina communis* – (Kreyling BKL 305536 CP)
- Poales**
- Cyperaceae**
- Bolboschoenus maritimus* (Kelly obs Little Neck Bay; Greller photo Nov 2015)
- Carex annectens* – (Castillo iNat 25115490 KP)
- C. blanda* – (Greller 080501–7 AP; G 210605 FP)
- C. cephalophora* – (Feder 210605 FP)
- C. comosa* – (Castillo iNat 26018905 FMP; obs Young 150815 The Alley– APEC)
- C. conjuncta* – (Feder 210605 FP)
- C. crinita* – (Greller BKL 292619)
- C. laevivaginata* – (Glenn BKL 268830 Crocheron P)
- C. lurida* – (Garguillo BKL 357798 Crocheron P; G APP 150815–17)
- C. mublenbergii* – (Greller BKL 310661 CP)
- C. pennsylvanica* – (Greller obs 900408 CP)

C. platyphylla – (Greller BKL 310923 AP)
C. rosea – (Feder 210605 FP)
C. scoparia – (Greller BKL311126 CP)
C. sparganioides – (Castillo iNat 12980536 Kissena Corridor)
C. straminea – (Greller 150815–19 AP)
C. swanii – (Greller BKL 293587 CP)
C. tetanica – (Greller BKL 311380 CP)
C. tribuloides – (Greller BKL 311426 AP)
C. typhina – (Feder 210605 FP)
C. virescens – (Greller QC690723–2 CP)
C. vulpinoidea – (Greller BKL 311548 CP)
Cyperus bipartitus – (Castillo iNat 16527195 Oak Lk)
C. diandrus – (Greller BKL 311735 AP)
C. erythrorhizos – (Greller BKL 9970 AP)
C. esculentus var. *leptostachyus* – (Castillo iNat 15294382 KP)
C. filicinus – (Greller BKL311897 CP)
C. iria (Greller QC150815–14 The Alley; Werier Jul 30, 2012 CP; specimen in NYS herbarium)
C. lupulinus var. *macilenta* – (Greller BKL 312018 CP)
C. strigosus – (Greller BKL 312179 CP)
Dulichium arundinaceum – (Greller obs Little Alley Pond [= Devil's Kettle] 121020 AP)
Eleocharis acicularis – (Greller BKL 312271)
E. obtusa – (Greller BKL 312430)
E. palustris – (Garguillo BKL 239669 FMP– Willow Lk)
E. tuberosa – (Greller BKL 312558 CP)
Fimbristylis autumnalis – (Greller obs AP)
Schoenoplectus americanus – (Greller BKL 313061 CP)
S. pungens – (Greller 150815–6 The Alley; obs.150815 AP– Little Alley Pond)
Scirpus atrovirens – Grellor (150815–22 The Alley)
S. cyperinus – (Greller obs 879806 AP)
S. hattorianus – (Garguillo BKL 357828 Crocheron Pk)
S. microcarpus – (Castillo iNat 25656158 KP)

Juncaceae

Juncus acuminatus – (Greller BKL 320317 CP)
J. articulatus – (Greller coll 150815 The Alley and AP–Little Alley Pd)
J. effusus – (Greller 080710–4 KP)
J. tenuis – (Bennett BKL 309472 Kissena Pk; Corona; Ridgewood Reservoir)
Luzula bulbosa – (Greller 080424 Oak Lk)

Poaceae

Agrostis gigantea – (Delendick BKL 323030 Rego Pk; Grellor 090707–24,25 Oak Lk)
A. hyemalis – (Greller BKL 342651 CP)
A. perennans – (Greller BKL 342711 CP)
A. stolonifera – (Greller BKL 342738 FMP–Willow Lk)
Aira praecox – (Greller 080515–4 CP)
Alopecurus aequalis – (Greller BKL 322343)
Andropogon gerardii (Greller photo 211003 FT)
A. virginicus – (Greller BKL 323402 FP)
Anthoxanthum odoratum – (Bennett BKL 300920 KP)
Brachyelytrum erectum – (Greller coll 080731–4 CP)
Bromus arvensis – (Greller 080605–20 AP)
B. inermis – (Greller BKL 325074 CP)
B. japonicus – (Greller BKL 325223 CP)
Cinna arundinacea – (Greller BKL 327694 CP)
Dactylis glomerata – (Greller obs 110430 AP)
Danthonia spicata – (Greller 080703–11 CP)
Dichanthelium boscii – (Wang, iNat 54312052 FP)
D. clandestinum – (Greller QC690625– 2 CP)
D. dichotomum ssp. *dichotomum* – (Greller QC690623–9 CP)
D. lanuginosum – (Greller BKL 342965 CP)
D. sphaerocarpon – (Greller QC690711–8 CP)
Digitaria ischaemum – (Sardinero coll 9/30/95 FMP)
Distichlis spicata – (Zeller BKL 330957 AP)
Echinochloa crus-galli var. *frumentacea* – (Greller 051005QCFM)
E. muricata – (Greller obs 870826 AP)
Eleusine indica – (Sardinero coll 950930 FMP)
Elymus hystrix – (Greller obs 080726 The Alley–APEC)
E. repens – (Greller QC690621–8 CP)
E. villosus (Greller photo 211003 FT)
Eragrostis capillaris – (Delendick BKL 343554 Bayside Hills)
E. cilianensis – (Delendick BKL 343590 Bayside Hills)
Festuca octoflora var. *octoflora* – (Greller BKL 347778 CP)

F. rubra – (Greller 090707–27, 28 Oak Lk)
Glyceria acutiflora – (Greller QC690818–19 CP)
G. striata – (Greller 150815–23 The Alley)
Holcus lanatus – (Greller obs 080726 CP)
Leersia oryzoides – (Greller obs 190922 APEC)
L. virginica – (Greller QC690820–5 CP)
Lolium perenne – (Greller obs 080726 Oak Lk)
Microstygium vimineum – (Greller obs 190922 APEC)
Muhlenbergia schreberi – (Greller coll 040927 AP)
Panicum dichotomiflorum – (Greller coll 040927 AP)
P. philadelphicum – (Greller 051005 QCFM; Wang photo 190922 The Alley)
P. virginicum – (Zeller BKL 344908 AP)
Phragmites australis – (Montoya BKL 345621 AP)
Poa annua – (Greller BKL 345733 CP)
P. compressa – (Greller BKL 345755 CP; Corona)
P. palustris – Grellor BKL 346291 Gabler's Crk, Douglaston)
P. pratensis – (Greller BKL 346311 CP)
Schedonorus pratensis – (Sardinero coll 960501 Kew Gardens Hills, Flushing)
Schizachyrium scoparium – (Greller BKL 346475)
Setaria faberi – (Bennett BKL 321203 Crocheron Pk)
S. pumila – (Greller 051005 QCFM)
Sorghastrum nutans (Greller iNat 1618911828; 161891814 FT 211003)
Sphenopholis intermedia – (Feder 210605 FP)
Sporobolus alterniflorus – (Zeller BKL 346898 AP)
S. patens – (Greller BKL 346975 AP)
Torreyochloa pallida – (Greller 150815–21 The Alley)
Tridens flavus var. *flavus* – (Greller iNat 97069732 FT 211003)

Typhaceae

Sparganium androcladum – (Greller BKL 335588 CP [X])
S. eurycarpum – (Glenn BKL 266713 Crocheron Pk)
Typha angustifolia – (Greller 880620–10 KP)
T. angustifolia x *T. latifolia* = *T. xglauca* – (Greller QC080703–4 AP)
T. latifolia – (Castillo iNat 33493737

(continued on next page)

(Checklist of Vascular Plants, continued from page 5)

- FP–Strack Pond; AP)
- Ceratophyllales Clade**
- Ceratophyllales**
- Ceratophyllaceae**
- Ceratophyllum demersum* – (Greller 080605–7 Oakl Lk; obs 100605 The Alley)
- EUDICOTS**
- Ranunculales**
- Berberidaceae**
- Berberis thunbergii* – (Greller 080424–20 AP)
- Podophyllum peltatum* – (Greller 080519–1 CP; Castillo iNat 23596005)
- Menispermaceae**
- Menispermum canadense* – (Greller: obs 080726 AP; photo July 2021 AP)
- Papaveraceae**
- Chelidonium majus* – (Greller 080424–19 AP)
- Sanguinaria canadensis* – (Greller photo 080424 AP)
- Ranunculaceae**
- Actaea pachypoda* – (Greller 080726 AP)
- A. racemosa* – (Glaeser BKL 322136 CP)
- Anemone quinquefolia* – (Glaeser BKL 321917 CP)
- Aquilegia vulgaris* – (Greller obs 080726 Oakl Lk)
- Clematis terniflora* (Greller photo 211003 FT)
- C. virginiana* – (Greller BKL 215692 CP [planted? X])
- Ficaria verna* – (Greller: 080417–39 AP; obs 120417 CP)
- Ranunculus abortivus* – (Greller 080515–8 CP)
- R. bulbosus* – (Greller BKL 322484 CP)
- R. hispidus* – (Greller obs 1960's CP; [X])
- R. recurvatus* – (Greller 080515–7 CP)
- R. repens* – (Greller BKL 9968 CP)
- R. sceleratus* – (Glenn BKL 266712 Crocheron Pk; Grellor 100605 Oakl Lk)
- Thalictrum dioicum* – ([planted NYCPR–NRC] Grellor 120417 CP; Castillo iNat 73997713 Oakl Lk)
- T. pubescens* – (Greller BKL 324499 CP)
- T. revolutum* – (Greller BKL 324624, 324626 CP)
- T. thalictroides* – Grellor photo 080424 Oakl Lk)
- Xanthorhiza simplicissima* – (Castillo iNat 23807433 AP–CP)
- Proteales**
- Platanaceae**
- Platanus occidentalis* – (Greller 080417 AP)
- Buxales**
- Buxaceae**
- Pachysandra procumbens* – (Greller 080424–3 Oakl Lk Pk; Castillo iNat 59120269 Oakl LP)
- P. terminalis* – (Greller 080417 AP)
- Saxifragales**
- Altingiaceae**
- Liquidambar styraciflua* – Zeiger QC950906–4 OLP)
- Cercidiphyllaceae**
- Cercidiphyllum japonicum* – (Greller obs 041023 CP)
- Crassulaceae**
- Hylotelephium telephium* – (Greller 080519–3 CP)
- Phedimus spurius* – (Delendick BKL307073 Astoria)
- Sedum acre* – (Delendick BKL307063 Bayside Hills)
- S. sarmentosum* – (Delendick BKL307070 Bayside; Astoria)
- Grossulariaceae**
- Ribes rubrum* – (Greller obs 080417 AP)
- Haloragaceae**
- Myriophyllum spicatum* – (Greller 080717–3 Oakl Lk)
- Hamamelidaceae**
- Hamamelis virginiana* – (Greller BKL74720; Grellor obs 210512 CP)
- Penthoraceae**
- Penthorum sedoides* – (Bennett BKL 327045 Golden Pk; Grellor obs AP)
- Saxifragaceae**
- Heuchera americana* – (Grellor photo 190831 FT)
- Vitales**
- Vitaceae**
- Ampelopsis glandulosa* – (Greller BKL 5539 FT; AP; APEC)
- Parthenocissus quinquefolia* – (Glaeser BKL 283534 CP; AP)
- Vitis aestivalis* – (Greller BKL 928 CP)
- V. labrusca* – (Greller BKL 118 CP)
- V. riparia* – (Delendick BKL 884 Rego Pk; Gatto BKL 235516 AP)
- Fabales**
- Fabaceae**
- Albizia julibrissin* – (Greller BKL 9962)
- Amorpha fruticosa* – (Greller 080508–9 CIP/FT)
- Amphicarpaea bracteata* – (Greller obs 080731 CP)
- Apios americana* – (Greller obs 080726 Oakl Lk)
- Chamaecrista nictitans* – (Greller obs 121027 APEC)
- Desmodium paniculatum* – (Wang photo 180605 AP; Grellor photos 190907 AP)
- Hylodesmum glutinosum* – (Greller obs CP [X?])
- H. pauciflorum* – (Feller BKL 316366 AP)
- Lathyrus latifolius* – (Kreyling BKL 316963 CP)
- Lotus corniculatus* – (Delendick BKL317298 Bayside Hills)
- Medicago falcata* – (Delendick BKL 317605 Astoria)
- M. lupulina* – (Greller 080508–6 CIP/FT)
- M. sativa* – (Delendick BKL 317584 Astoria)
- Melilotus alba* – (Bennett BKL 309471 KP; Grellor obs 190907 The Alley)
- M. officinalis* – (Greller BKL 38552 CP)
- Phaseolus polystachios* – (Greller, 041023 CP)
- Robinia hispida* – (Greller obs 051005 QCFCM)
- R. pseudoacacia* – (Greller BKL 205635 CP)
- Senna hebecarpa* – (Atha iNat 14865737 Oakl Lk Pk; cult)
- Strophostyles helveola* – (Greller: BKL 317862 CP; LBPk–FT)
- S. umbellata* – (Delendick BKL 317885 Bayside Hills)
- Trifolium arvense* – (Delendick BKL 317967 Rego Pk)
- T. campestre* – (Greller obs 090707 OLP)
- T. dubium* – (Delendick BKL 318107 Bayside Hills)
- T. hybridum* – (Zitser iNat 31802837 AP)
- T. pratense* – (Greller obs 080501 The Alley; Barbera QC880610–17)
- T. repens* – (Bennett BKL 306715 Crocheron Pk)
- Vicia cracca* – (Greller 051005 QCFCM)
- Wisteria sinensis* – (Greller 080431–20 The Alley)
- Rosales**
- Cannabaceae**
- Celtis occidentalis* – (Greller BKL 227566 CP)
- Humulus japonicus* – (Castillo iNat 33684143 Kissena Corridor)
- H. lupulus* – (Greller obs 051005 QCFCM)
- Elaeagnaceae**
- Elaeagnus commutata* – (Hengel

- 931030 QC)
Elaeagnus umbellata – (Greller 080431–12 The Alley)
- Moraceae**
Broussonetia papyrifera – (Glaeser BKL 283543 CP)
Morus alba – (Delendick BKL 175838 Astoria)
M. rubra – (Greller 880608 CP)
- Rhamnaceae**
Frangula alnus – (Greller BKL 39044 CP; Ridgewood Reservoir)
Rhamnus cathartica – (Greller obs 2003 CP; Grellor 080522–6 FP)
- Rosaceae**
Agrimonia gryposepala – (Greller BKL 332799 CP)
A. pubescens – (Feller BKL 332972 CP; Grellor 090714–1 CP)
A. rostellata – (Greller BKL 332994 CP)
Amelanchier canadensis – (Greller BKL 340817 CP)
Aronia prunifolia – (Greller 701028–1 CP)
Crataegus crus-galli – (Greller BKL 276951 CP)
C. intricata – (Greller 690524–7 CP)
C. mollis? – (Peterson Pierre, 901003 CP)
C. phaenopyrum – (Greller 080431–10 The Alley)
Fragaria virginiana – (Greller obs CP [X])
Geum canadense – (Greller obs 190922 The Alley; Grellor obs 210605 FP)
Kerria japonica – (Greller BKL 8783 CP)
Malus baccata – (Greller obs 051005 QCFM, Grellor 931019–1 CP)
M. coronaria – (Greller BKL 9972 CP)
M. floribunda – (Greller 710511 CP)
M. hupehensis – (Greller 931019–2, CP)
M. pumila – (Bodzin iNat 148879773 East Elmhurst 200805)
M. x purpurea – (Greller 900422 CP)
M. x robusta – (Greller 900422 CP)
M. x schiedeckerii – (Greller 900422 CP)
M. toringo – (Greller 051005 QCFM)
Photinia villosa – (Greller 080522–3 FP)
Potentilla argentea – (Greller 080508–5 FT)
P. canadensis – (Wang photo 180605 AP)
P. indica – (Greller: BKL 8775 AP; 190922 The Alley; 210427 CP)
P. norvegica – (Greller BKL 341692 CP)
P. recta – (Greller BKL 341734 CP)
P. simplex – (Panagiota 950923–18 CP)
Prunus avium – (Glaeser BKL 283535 CP)
P. maritima – (gravel on bridge; (Greller BKL 227693 CP [X])
- P. serrulata* – (Greller 080421–5 CP)
P. serotina – (Greller BKL 226998 CP)
Pyrus calleryana – (Greller coll 080417 AP)
Rhodotypos scandens – (Glaeser BKL 283528 CP)
Rosa luciae – (Greller BKL 237040)
R. multiflora – (Greller BKL 227229)
R. setigera – (Greller BKL 342570)
R. virginiana – (Greller BKL 342405)
Rubus allegheniensis – (Delendick BKL 327656 Ridgewood Reservoir)
R. flagellaris – (Greller BKL 329150 CP; Rego Park)
R. hispidus – (Greller 080703–14 AP)
R. laciniatus – (Greller coll 080417 AP)
R. occidentalis – (Greller obs 080703 AP)
R. odoratus – (Greller obs 080703 AP)
R. pensilvanicus – (Greller 690702–4 CP)
R. phoenicolasius – (Buff QC06/05/91)
- Ulmaceae**
Ulmus americana – (Greller 080508–10 FT)
U. pumila – (Greller 890603 AP)
U. rubra – (Greller 080508–10 CIP/FT)
- Urticaceae**
Boehmeria cylindrica – (Glaeser BKL 283051 CP; Grellor obs 150815 AP)
Pilea pumila – (Greller obs 210605 FP)
- Fagales**
- Betulaceae**
Alnus glutinosa – (cultiv; Glenn BKL 266711 Crocheron Pk; Grellor photo 141108 AP)
A. serrulata – (Greller BKL 174112 AP)
Betula lenta – (Greller 210427 CP)
B. nigra – (Castillo iNat 20518338 AP)
B. populifolia – (Buff QC06/05/91)
Carpinus caroliniana – (Greller 210605 FP)
Corylus americana – (Greller BKL 174485 CP; Rego Park)
Ostrya virginiana – (Greller coll 000422 AP)
- Fagaceae**
Castanea dentata – (Castillo iNat 31802837 AP)
Fagus grandifolia – (Greller BKL 346316 CP; AP)
Quercus alba – (Castillo iNat#:17654980)
Quercus alba x *Q. bicolor* = *Q. xjackiana* – (Greller BKL 206804 CP)
Q. bicolor – (Greller BKL 227689 CP)
Q. coccinea – (Millman 710924–15 CP)
Q. montana – (Greller 690610 CP)
Q. palustris – (Barbera 880620–5 KP)
- Q. robur* – (Delendick BKL 204660 Ridgewood Reservoir)
Q. rubra – (Greller BKL 258645 CP)
Q. velutina – (Kaner 710924 CP)
- Juglandaceae**
Carya cordiformis – (Greller 080417 AP; obs CIP/FT)
C. glabra – (Greller BKL 175725)
C. ovalis – Synonymy with *C. glabra* rejected by Grellor (Greller 850516 CP; Zitser iNat 157344607)
C. ovata – (G 080508–12 CIP/FT; [X–190831])
C. tomentosa – (Greller BKL 175684)
Juglans cinerea – (Greller obs CP, QCFM; FT cultiv.)
J. nigra – (Greller 051005 QCFM)
- Myricaceae**
Morella carolinensis – (Gatto BKL 235508 AP)
- Cucurbitales**
- Cucurbitaceae**
Citrullus lanatus ssp. *lanatus* – (Greller 051005 QCFM)
Echinocystis lobata – (Greller obs CP, 2003 AP)
Sicyos angulatus – (Beharry BKL 307130 AP; Grellor: obs 190922 The Alley, LBPK–FT)
- Celastrales**
- Celastraceae**
Celastrus orbiculata – (Moskovic 760930 FP)
Euonymus alata – (Greller BKL 174634)
E. americanus – (Castillo iNat 63798720 Oak Lk; AP; Castillo and Grellor photos 211011 CP)
E. europaeus – (Greller coll 000422 AP)
E. fortunei – (Greller coll 080417 AP)
- Oxalidales**
- Oxalidaceae**
Oxalis corniculata – (Delendick BKL 329413 Bayside Hills; Rego Park)
O. dillenii – (Greller 080417–19 AP)
O. stricta – (Delendick BKL 329616 Bayside Hills; Grellor 690830 CP)
- Malpighiales**
- Euphorbiaceae**
Acalypha australis – (Delendick BKL 290330 Astoria, Rego Park, Ridgewood Reservoir)
A. rhomboidea – (Bennett BKL 331465 Crocheron P)
Euphorbia cyparissias – (Greller, 690625–22, CP)

(continued on next page)

(Checklist of Vascular Plants, continued from page 7)

- E. maculata* – (Greller QCFM 051005) The Alley)
E. nutans – (Greller obs 161105 KP)
E. virgata – (Greller 690516–11 CP)
- Hypericaceae**
Hypericum mutilum – (Greller obs CP)
H. perforatum – (Kreyling BKL 303919 CP)
H. punctatum – (QC900706 CP)
H. virginicum – (Greller obs CP)
- Passifloraceae**
Passiflora incarnata – (persisting after cultiv – Grellor photos 141108 AP–Alley Pond)
- Salicaceae**
Populus alba – (Greller 690826–4 CP)
P. deltoides – (Zeller BKL 235539 AP; Grellor photo 080421 CP)
P. grandidentata – (Greller BKL 8478 CP)
P. tremuloides – (Greller obs 080731CP)
Salix alba x *S. babylonica* – (Greller BKL 8480 CP)
S. alba x *S. euxina* – (Barbera QC 890610–5 Oakl Lk; Grellor 190922 The Alley); *Salix* x *rubens* (Greller BKL 9966)
S. cinerea – (Greller obs 100605, 191022 The Alley)
S. discolor – (Greller BKL 8481 CP [X?])
S. eriocephala – (Greller BKL 258947 Little Neck RR Sta)
S. fragilis – (Greller obs 190922 The Alley; obs 080419 AP)
S. humilis – (Greller 040927 AP)
S. nigra – (Petillo QC880610–18 Oakl Lk)
S. purpurea – (Greller BKL 9961 CP)
- Violaceae**
Viola affinis – (Greller 080508–1 FT)
V. cucullata – (Greller 080417–17 AP)
V. cucullata forma *alba* – Grellor 080417–16 AP)
V. palmata – (Greller obs CP [X?])
V. sagittata var. *ovata* – (Wang photo 180605 AP)
V. sororia – (Greller 900408, CP)
V. sororia forma *priceana* – Grellor 080417–27 AP)
- Geraniales**
Geraniaceae
Geranium maculatum – (Greller 210605 FP)
G. robertianum – (Morgan obs 060611 AP)
- Lythraceae**
Decodon verticillatus – (Greller coll 080726 AP)
Lythrum salicaria – (Greller 080501
- Melastomataceae**
Rhexia virginica – (Greller obs AP – [X])
- Onagraceae**
Circaea canadensis – (Greller obs 080726 AP)
Epilobium ciliatum – (Greller 150815–20 The Alley; Bennett BKL 321206 Crocheron Pk)
E. coloratum – (Bennett BKL 309480 KP)
Ludwigia alternifolia – (Greller 690822 CP)
L. palustris – (Greller obs 080726 APEC)
Oenothera biennis – (Greller BKL 38228 CP)
O. parviflora – (cinders on bridge, Grellor 950725 CP)
- Sapindales**
Anacardiaceae
Rhus aromatica – (Delendick BKL 288566 Bayside)
R. copallinum – (Delendick BKL 172832 Ridgewood Reservoir)
R. glabra – (Marino 670921 AP; Grellor obs 150815 APEC)
R. typhina – (Greller BKL 173086 CP)
Toxicodendron radicans – (Delendick BKL 173123 Ridgewood Reservoir)
- Rutaceae**
Phellodendron amurense – (Greller 751018 FP)
- Sapindaceae**
Acer campestre – (Greller BKL 9956 AP)
A. ginnala – (Greller obs 080731 CP)
A. negundo – (Greller BKL 172396)
A. palmatum – (Greller coll 080417 AP)
A. platanoides – (Greller BKL 172477)
A. pseudoplatanus – (Greller 080508–8 FT)
A. rubrum – (Glaeser BKL 283537 CP)
A. saccharinum – (Barbera QC 880610–15)
A. saccharum – (Buff QC 06/05/91)
Aesculus hippocastanum – (Opelinski 931016 AP)
Koeleruteria paniculata – (Greller 080508 FT)
- Simaroubaceae**
Ailanthus altissima – (Barbera QC880610–8 Oakl Lk)
- Malvales**
Cistaceae
Lechea racemulosa – (Greller BKL305304 FT)
- Malvaceae**
Hibiscus moscheutos – (Greller 080508–3 Little Neck Bay/FT; obs 150815 APEC)
H. syriacus – (Greller obs 080726 AP – Turtle Pond)
Malva neglecta – (Greller coll 080417 AP)
Tilia americana – (Greller 090714 CP)
T. cordata – (Glenn BKL 266710 Crocheron Pk)
T. platyphyllos – (Greller 690516–11 CP)
- Brassicales**
Brassicaceae
Alliaria petiolata – (Glaeser BKL 283541 CP)
Arabidopsis thaliana – (Delendick BKL 42141 Bayside)
Barbarea vulgaris – (Delendick BKL 286886 Bayside)
Capsella bursa-pastoris – (Delendick BKL 42158 Maspeth)
Cardamine diphylla – (Greller 080522–7 FP)
C. hirsuta – (Greller 080417 AP)
C. impatiens – (Castillo iNat 25168767 FP)
C. laciniata – (Greller: BKL32234; obs 080424 Oakl Lk)
Draba verna – (Delendick BKL42160 Bayside)
Hesperis matronalis – (Castillo iNat 58419904 KP 120516)
Lepidium campestre – (Delendick BKL 42164 Bayside)
L. didymium – (Feder 210605 FP)
L. virginicum – (Bennett BKL 309469 KP)
Lunaria annua – (Greller BKL 6365)
Mummenhoffia alliacea – (Castillo iNat 21744939)
Nasturtium officinale – (Greller 080605–11 Oakl Lk)
Raphanus raphanistrum ssp. *raphanistrum* – (Greller BKL 5538 FT)
Rorippa palustris – (Bennett BKL 321010 KP)
R. sylvestris – (Greller 890608–6 CP)
Sisymbrium altissimum – (Greller obs 080731 CP)
S. officinale – (Greller obs 051005 QCFM)
Thlaspi arvense – (Delendick BKL 42180 Bayside)
- Cleomaceae**
Tarenaya hassleriana – (Delendick BKL 301549 Maspeth)
- Caryophyllales**
Amaranthaceae
Amaranthus blitum – (Greller BKL

- 288014 FT)
A. cannabinus – (Greller 080726 The Alley–saltmarsh)
A. hybridus – (Greller 051005 QCFM)
A. retroflexus – (Delendick BKL 288150 Bayside Hills)
Atriplex patula – (Greller BKL 332317 FT)
Bassia scoparia – (Greller photo 211003 LBPk–FT)
Chenopodium murale – (Greller 161015–1 FT)
Chenopodium album – (Bennett BKL 309481 Kissena P)
Dysphania pumilio – (Delendick BKL304053 Rego Pk)
Salicornia bigelovii – (Greller BKL304069 FT)
Suaeda linearis – (Greller BKL305193 FT)
S. maritima – (Greller BKL305217 FT)
- Caryophyllaceae**
Arenaria serpyllifolia – (Delendick BKL302192 Rego Pk)
Cerastium fontanum ssp. *vulgatum* – (Greller 080421–4 CP)
Paronychia canadensis – (Greller 080605–9 OLP)
Sagina japonica – (Greller obs 100605 OLP)
S. procumbens – (Greller obs 100605 OLP)
Scleranthus annuus – (Delendick BKL302955 Ridgewood Reservoir)
Silene caroliniana – (Greller obs CP [X])
S. dioica – (Kelly iNat 47329318 APEC)
S. latifolia – (Greller 051005 QCFM)
S. stellata – (Greller obs 080731 CP)
S. vulgaris – (Greller 051005 QCFM; Ferrandiz 890608 FP)
Spergularia rubra – (Delendick BKL 303416 Bayside Hills)
Stellaria graminea – (Castillo iNat 16578880 The Alley)
S. media – (Delendick BKL 303637 Corona)
- Molluginaceae**
Mollugo verticillata – (Castillo iNat 30949879 QC)
- Montiaceae**
Claytonia virginica – (Greller BKL 9958 AP; 080421 CP)
- Nyctaginaceae**
Mirabilis nyctaginea – (Delendick BKL 226883 Astoria)
- Phytolaccaceae**
Phytolacca americana – (Castillo iNat 8087028 Kissena Corridor)
- Polygonaceae**
Fagopyrum esculentus (Castillo iNat 34457631 KP)
Fallopia scandens – (Scher 860926–7 CP)
Persicaria coccinea – (Greller obs CP [X] as of 150804)
P. extremiorientalis – (Delendick BKL 296226 Bayside Hills; Greller QC150815–8 The Alley)
P. hydroppiper – (Greller: BKL 9971 CP; QC150815–18 The Alley)
P. hydroppiperoides – (Greller 150815–3 AP)
P. lapathifolia – (Greller QC150815–11; Atha obs 190922 The Alley)
P. longiseta – (Bennett: BKL 306336 Crocheron Pk; Astoria; Corona)
P. maculosa – (Greller: QC150815–2, The Alley; photo 211003 LBPk–FT)
P. pennsylvanica – (Greller BKL 3740)
P. perfoliata – (Feder obs 210605 FP; Greller photo 211003 FT)
P. punctata – (Atha iNat 7878389 APEC)
P. sagittata – (Beharry BKL 295502; Greller obs 190922 APEC)
P. setacea – (Greller BKL 295911 CP)
P. virginiana – (Greller: BKL 295572 CP; 190922 The Alley)
Polygonum aviculare – (Bennett BKL 309473 KP)
P. aviculare ssp. *depressum* – (Greller 051005 QCFM)
P. erectum – (Delendick BKL 300232 Bayside)
Reynoutria japonica – [Beharry BKL 296295 AP]
R. japonica x **R. sachalinensis** = **R. x bohémica** (Atha obs 150815, 190922 APEC)
Rumex acetosella var. *pyrenaica* – (Greller: BKL 300822 CP; obs 150804 The Alley)
R. crispus – (Greller BKL 331424 CP)
R. obtusifolius – (Greller BKL 331448 CP)
- Portulacaceae**
Portulaca oleracea – (Greller 051005 QCFM)
- Cornales**
- Cornaceae**
Cornus alternifolia – (Glaeser BKL 283536 CP)
C. amomum – (Panagiota QC950906–35 Oak Lk)
C. florida – (Greller BKL 38830 CP)
- C. racemosa** – (Greller BKL 38861 CP)
C. mas – (Greller BKL 38855 CP)
C. sericea – (Greller BKL 227690 CP)
Philadelphus coronarius – (Greller BKL 174771 CP)
P. inodorus – (Greller obs 210605 FP)
- Nyssaceae**
Nyssa sylvatica – (Glaeser 283499 CP)
- Ericales**
- Balsaminaceae**
Impatiens capensis – (Greller BKL 299185 CP)
- Clethraceae**
Clethra alnifolia – (Glaeser BKL 283532 CP)
- Ericaceae**
Chimaphila maculata – (Greller: photo 080424 CP; obs 080726 AP)
Eubotrys racemosa – (Greller obs 080726 AP)
Gaylussacia baccata – (Greller 690414–14 CP [X])
Kalmia angustifolia – (Greller 690714–14 CP [X])
K. latifolia – (Castillo iNat 65821019 FP)
Lyonia mariana – (Greller QC690714–5 CP [X])
Monotropa uniflora – (Greller, QC952907 CP; Castillo Photo 20211001093106[4555] AP 211001)
Pyrola americana – (Greller: photo 080417 AP; obs 211011 CP)
Rhododendron perichlymenoides – (Greller: BKL 6440 AP; 080508–14 Clearview Golf Course)
R. viscosum – (Greller obs 090714 CP)
Vaccinium corymbosum – (Glaeser BKL 283531 CP)
V. pallidum – (Greller obs 110430 AP)
- Polemoniaceae**
Phlox paniculata – (Greller 690913–10 CP)
P. stolonifera – (cultivated; Greller 080424–10 OLP [X])
- Primulaceae**
Lysimachia ciliata – (Greller QC690711–10 CP)
L. hybrida – (Greller BKL 4109 CP)
L. quadrifolia – (Greller BKL 4108 CP)
- Styracaceae**
Halesia tetraptera – (Greller BKL 2350 CP)
- Symplocaceae**
Symplocos paniculata – (Bennett BKL 269699 KP)

(continued on next page)

(Checklist of Vascular Plants, continued from page 9)

Gentianales

Apocynaceae

- Apocynum androsaemifolium* – (Bennett BKL 269688 Maspeth)
A. cannabinum – (Greller BKL 45079 FT)
Asclepias exaltata – (Greller BKL 289941; AP 080703)
A. incarnata – (Greller 150815 The Alley)
A. purpurascens – (Greller obs [misidentified?] CP)
A. syriaca – (Castillo iNat 16513158)
A. tuberosa – (Castillo iNat 16527208 OL [cultiv, persisting?])
Cynanchum louiseae – (Ehrlich QC670928 AP)
Vinca minor – (Greller 080417–31 persisting after cult AP)

Rubiaceae

- Cephalanthus occidentalis* – (Greller obs 080703 AP – Lily Pond)
Galium album – (Greller obs 080501 The Alley)
G. aparine – (Bennett BKL 306337 Crocheron Pk)
G. asprellum – (Greller obs 080731 CP)
G. circaezans – (Greller BKL 227691 CP)
G. pilosum – (Greller BKL 332666 CP)
G. sherardia – (Greller 100414 Creedmoor Hospital, Bellerose)
G. triflorum – (Greller obs 950729 CP)
G. verum – (Delendick BKL 332763 Bayside Hills)
Mitchella repens – (Opelinski 931016 AP; Grellor 080703–15 AP)

Boraginales

Boraginaceae

- Echium vulgare* – (Herschkopf 700922 CP)
Hackelia virginiana – (Greller obs AP; Panagiota 950920–8 Oak Lk [X?])
Myosotis stricta – (Greller obs 100414 Creedmoor Hospital, Bellerose)

Solanales

Convolvulaceae

- Calystegia sepium* – (Greller obs 051005 QCFM)
Convolvulus arvensis – (Greller 051005 QCFM)
Cuscuta compacta – (Greller: 081017 QBG Flushing; Little Alley Pond 150815–1)
C. gronovii – (Greller BKL 9960 CP)
C. pentagona – (Greller BKL 288338)
C. polygonorum – (Greller BKL 9963)
Ipomoea hederacea – (Greller 051005 QCFM)

Solanaceae

- Datura stramonium* – (Greller photos 190831, 211003 LBPk–FT)
Lycium barbarum – (waif, Grellor obs AP [X])
Petunia axillaris – (waif; Grellor BKL 335426; [X])
Solanum carolinense – (Greller obs 080419 AP)
S. dulcamara – (Greller BKL 202448 CP)
S. lycopersicum – (Greller BKL 335427 FT)
S. nigrum – (Greller obs 090707 AP)
S. ptycanthum – (Greller obs 051005 QCFM)

Lamiales

Bignoniaceae

- Campsis radicans* – (Morgan 060611 AP; Feder 210605 FP)
Catalpa bignonioides – (sapling, Grellor obs The Alley)

Lamiaceae

- Agastache nepetoides* – (Greller coll 080424 AP)
Ajuga reptans – (Greller coll 080424 Oak Lk)
Collinsonia canadensis – (Glaeser BKL 285234 CP)
Glechoma hederacea – (Greller 080431 APEC)
Lamium amplexicaule – (Greller coll 080421 CP)
L. purpureum – (Greller coll 080417 AP)
Leonurus cardiaca – (Greller obs 090417 AP)
Lycopus americanus – (Greller BKL 323237 CP)
L. rubellus – (Greller QC690820–3 CP)
L. virginicus – (Opolinsky 931016 AP)
Prunella vulgaris – (Greller BKL 324253 FT)
Scutellaria lateriflora – (Greller obs 080703 AP)
Stachys byssopifolia – (Greller BKL 9959 CP)

Lentibulariaceae

- Utricularia vulgaris* (Greller obs CP [X])

Linderniaceae

- Lindernia dubia* (Greller obs 080726 AP– Little Alley Pond aka Devils Kettle)

Mazaceae

- Mazus pumilus* – (Greller 080431–21 APEC)

Oleaceae

- Fraxinus americana* – (Greller: BKL 176194 CP; 210512 CP [large

trees dying CP and AP])

F. pennsylvanica – (Greller BKL 176217 FT)

Ligustrum obtusifolium – (Greller BKL 176254 CP)

L. vulgare – (Greller BKL 176244 FT)

Orobanchaceae

Agalinus purpurea – (Greller BKL 333392 CP)

Epifagus virginiana – (Dhamoon QC10/16/93 AP)

Orobanche uniflora – (Walter photo 210518 CP)

Pedicularis canadensis – (Greller obs CP [X])

Paulowniaceae

Paulownia tomentosa – (Castillo iNat 7892007 AP)

Phrymaceae

Mimulus ringens (Zitser iNat 89867128 AP)

Phryma leptostachya – (Greller BKL 328867 CP)

Plantaginaceae

Callitriche palustris – (Greller 080424–11 Oak Lk)

C. stagnalis – (Greller BKL 9967 AP)

Chelone glabra – (Greller obs AP/ Oak Lk [X])

Linaria vulgaris – (Delendick BKL 333798 Bayside Hills)

Penstemon digitalis – (Greller 090707 APEC)

Plantago aristata – (Delendick BKL 329846 CP)

P. lanceolata – (Dhamon 931012 Flushing roadside)

P. major – (Greller BKL 330028 FT)

P. rugelii – (Sardinero coll 950930 FMP)

Veronica arvensis – (Greller 080508–13 Clearview Golf Course)

V. hederifolia – (Greller 080417–20 AP)

V. peregrina – (Greller: BKL 334735 CP; 080508–13 Clearview Golf Course)

V. persica? – (Greller coll 080417 AP)

V. serpylliflora – (Delendick BKL 334808 Astoria)

Veronicastrum virginicum – (Greller 690721–13, CP [X])

Scrophulariaceae

Scrophularia marilandica – (Greller 080726 AP)

Verbascum blattaria – (Greller BKL 334421 FT)

V. thapsus – (Castillo iNat 16630652 KP)

Verbenaceae

- Verbena hastata* – (Greller/Kelly obs 150804 The Alley)
V. urticifolia – (Glaeser BKL 283050 CP; also AP, OLP)

Aquifoliales**Aquifoliaceae**

- Ilex crenata* – (Greller: 080417–14 AP; obs 210427 CP)
I. opaca – (sapling Grellor obs 061106 CP; obs 080417 AP, [cultivated NYCP&R])
I. verticillata – (Greller 690623–3 CP)

Asterales**Asteraceae**

- Achillea millefolium* – (Alley Creek Ecoquest Club at APEC iNat 22514281 OLP)
Ageratina altissima – (Delendick BKL 290894 Bayside)
Ambrosia artemisiifolia – (Zeller BKL290917 AP)
A. trifida – (Bennett BKL 321199 Crocheron Pk)
Antennaria neglecta – (Greller obs CP [X])
Arctium minus – (Greller BKL 9964 CP)
Artemisia vulgaris – (Montoya BKL 291548 AP)
Baccharis halimifolia – (Delendick BKL42134 Flushing Bay)
Bidens alba – (Greller obs 161105 KP)
B. connata – (Panagiota 950913–13 CP)
B. frondosa – (Castillo iNat 8105600)
B. trichosperma – (Greller BKL 9975 AP)
B. tripartita – (Greller 690913–8 CP)
Centaurea nigrescens – (Delendick BKL 291986 Bayside)
Cichorium intybus – (Greller obs 051005 QCFM)
Cirsium arvense – (Greller 051005 QCFM)
C. vulgare – (Kotick 721013 CP)
Coreopsis rosea – (Greller BKL 292331 AP?)
Eclipta prostrata – (Greller photo 080726 AP)
Erechtites hieracifolia – (Castillo iNat 33097281)
Erigeron annuus – (Greller BKL 292543 Rego Park)
E. canadensis – (Greller 051005 QCFM)
E. philadelphicus – (Bennett BKL 269738 Maspeth)
E. strigosus – (Greller BKL 292711 FT)
Eupatorium perfoliatum – (Greller coll 080726 APEC; photo 190831 FT)

- E. serotinum* – (Greller 150815, 190922 The Alley)
Eurybia divaricata – (Glaeser BKL 293205 CP)
E. macrophylla – (Greller BKL 293324 CP)
Euthamia caroliniana – (Greller obs CP)
E. graminifolia – (Beharry BKL 293476 AP)
Eutrochium dubium – (Greller coll 061107)
E. fistulosum – (Greller obs 150804 AP – The Alley)
E. purpurea – (Lamont obs 210605 FP; Castillo iNat 32960848 CP)
Gaillardia pulchella – (Castillo iNat 17305589, Flushing Airport)
Galinsoga parviflora – (Greller BKL 293693 AP)
G. quadriradiata – (Delendick BKL 293729 Rego Park; Corona)
Gamochaeta pennsylvanica – (Bennett BKL 321011 KP)
Gnaphalium uliginosum – (Greller BKL 293771)
Helianthus annuus – (Greller 190831 Ft Totten–LBPk)
H. divaricatus – (Greller 700914–9 CP)
H. giganteus – (Greller 150815–24 The Alley)
Heliopsis helianthoides – (Greller photos 080726 AP)
Hieracium kalmii – (Greller: BKL 9974 AP); BKL 294124 AP?)
H. paniculatum – (Greller 750925, AP)
Hypochaeris radicata – (Bennett BKL 309474 KP)
Iva frutescens – (Greller 080508–4 FT–Little Neck Bay)
Lactuca biennis – (Lumer BKL 294539 CP)
L. canadensis – (Greller BKL 294622 AP)
L. serriola – (Greller obs 870806 AP)
Lapsana communis – (Greller 080605–10 Oakl Lk)
Matricaria discoidea – (Delendick BKL 42150 Maspeth)
Mikania scandens – (Greller obs 121027 APEC)
Nabulus albus – (Greller obs. 210512 CP; Castillo iNat 32960820 CP)
N. trifoliatum – (Castillo iNat 23596017 CP 190427)
Pilosella caespitosum – (Greller BKL 294149 FT)
P. piloselloides – (Greller obs CP)

- Pluchea odorata* – (Greller obs 080726 AP– Little Alley Pond)
Pseudognaphalium obtusifolium – (Greller 051005 QCFM)
Rudbeckia hirta – (Greller obs 090707 Oakl Lk)
R. triloba – (Castillo iNat 211019 Little Neck)
Senecio vulgaris – (Bennett BKL 310255 Crocheron Pk)
Sericocarpus asteroides – (Greller obs CP)
Solidago altissima – (Atha obs 190922 The Alley; Grellor 051005 QCFM)
S. arguta – (Castillo iNat 33498565 Glendale)
S. bicolor – (Greller obs CP)
S. caesia – (Feder obs 210605 FP)
S. flexicaulis – (Greller BKL 37545 CP)
S. gigantea – (Lamont obs 210605 FP; Grellor photo 211003 FT)
S. juncea – (Greller BKL 296347)
S. odora – (Castillo obs AP; cultiv.?)
S. rigida – (Castillo obs AP; cultiv.?)
S. rugosa – (Greller: obs CP; photo 211003 FT)
S. sempervirens – (Greller obs The Alley)
S. speciosa – (Atha iNat 33201962)
S. ulmifolia – (Greller BKL 296940 CP)
Sonchus oleraceus – (Greller BKL297125 FT)
Symphotrichum cordifolium – (Greller BKL 37546 CP)
S. ericoides – (Greller: obs in gravel on bridge CP; photo 211003 FT)
S. leave – (Lewengood 710925 FP)
S. lanceolatum – (Lumer BKL 297917 KP)
S. lateriflorum – (Lumer BKL 297972 CP)
S. novae-angliae – (Greller: 051005 QCFM; Grellor photo 211003 FT)
S. pilosum – (Lumer BKL344050 KP)
S. racemosum – (Greller BKL 9976 BKL 9977)
Tanacetum vulgare – (Greller 051005 QCFM)
Taraxacum officinale – (Greller 080417– 15 AP)
Tussilago farfara – (Greller BKL 299034 AP)
Xanthium strumarium – (Greller obs 080419 AP)
Youngia japonica – (Greller photos 121027 APEC [X])
- Campanulaceae**
Lobelia cardinalis – (Greller obs
(continued on next page))

(Checklist of Vascular Plants, continued from page 11)

- 080726 Oak Lk [cultiv?])
L. inflata – (Greller coll 080726 Oak Lk)
Triodanus perfoliata – (Delendick BKL301373 Corona)
- Menyanthaceae**
Nymphoides peltata – (Greller 080703–3 AP–Little Alley Pond)
- Dipsacales**
- Adoxaceae**
Sambucus nigra ssp. ***canadensis*** – (Scher 860926–16 CP)
Viburnum acerifolium – (Greller obs 210512 CP)
V. dentatum var. ***lucidum*** – (Buff QC 910605)
V. dilatatum – (Greller 080431–18 AP)
V. lentago – (Greller coll 080424 Oak Lk)
V. opulus – (Greller BKL 173779 FT)
V. plicatum var. ***tomentosum*** – (Greller obs CP, FP)
V. prunifolium – (Greller 080431–5 The Alley)
V. setigerum – (Glaeser BKL 283539 CP)
V. sieboldii – (Greller BKL173946 CP)
- Caprifoliaceae**
Diervilla lonicera – (Greller BKL 152695 CP)
- 152695 CP**
Dipsacus fullonum – (Greller BKL 38551 CP)
D. sativus – (Greller BKL 9978 CP)
Lonicera xbella ‘***dropmore***’ – (Greller 690625–13 CP)
L. frangrantissima – (Greller BKL 173309 CP; obs 120404 AP)
L. japonica – (Barbera QC880610–4 Oak Lk)
L. maackii – (Greller obs 210605 FP)
L. morrowii – (Greller obs 100605 AP; obs 120404 The Alley)
L. sempervirens – (Feder obs 210605 FP)
L. tatarica – (Greller 080431–11 AP)
Symphoricarpus orbiculatus – (Greller coll 910928 CP)
Valerianella locusta – (Greller 080431–17, 080501–17 The Alley)
- Apiales**
- Apiaceae**
Aethusa cynapium – (Bennett BKL 309476 Kissena Pk)
Angelica venenosa – (Greller 890609–06 CP [X])
Anthriscus sylvestris – (Greller 080431–22 Little Neck)
- 080431–22 Little Neck**
Cicuta maculata – (Bennett BKL 309475 KP)
Cryptotaenia canadensis – (Greller obs 080731 CP; Oak Lk; FP)
Cyclosporum leptophyllum – (Feder obs 210605 FP)
Daucus carota – (Dhamon 930918 QC)
Heracleum maximum (Greller 080501 The Alley)
Osmorhiza claytoni – (Greller 080508–2 FT)
O. longistylis – (Greller BKL 43248 CP)
Pastinaca sativa – (Greller BKL 43297)
Sanicula canadensis – (Greller obs190831 FT; photos 190907AP)
S. marilandica – (Greller BKL 43383 CP)
S. odorata – (Greller 080522–1 FP)
Sium suave – (Greller BKL 227692 CP)
- Araliaceae**
Aralia elata – (Greller BKL 289592)
A. nudicaulis – (Glaeser BKL 289649 CP)
A. racemosa – (Glaeser BKL 283538 CP)
Eleutherococcus sieboldianus – (obs Morgan 2013 AP; Grellor coll 150814 CP)
Hedera helix – (Greller coll 080417 AP)